

Distillate

Sample ID: 2102KCA0139.0337

Cultivar: N/A

Matrix: Concentrates & Extracts

Type: Distillate

Sample Size:

Received: 02/01/2021

Completed: 02/17/2021

Batch#: 1060418-2021-TFD-0129

Client

Lic.#



Summary

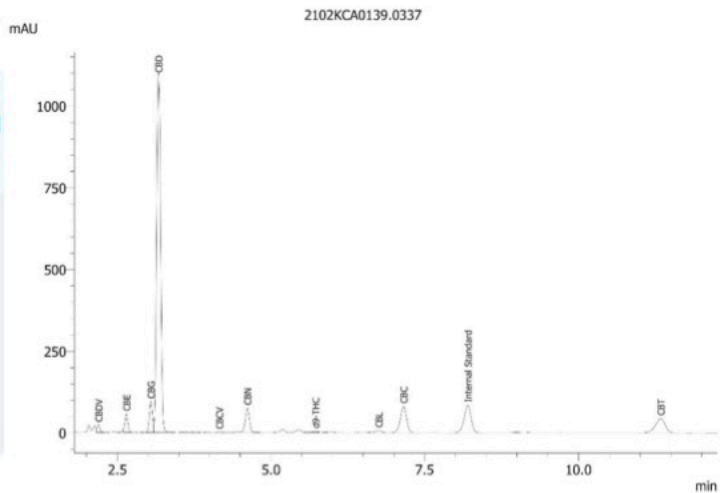
Test	Date Tested	Result
Cannabinoids	02/10/2021	Complete
Residual Solvents	02/10/2021	Complete
Pesticides	02/03/2021	Complete
Heavy Metals	02/17/2021	Complete

Cannabinoids by HPLC-PDA

Complete

0.2220% Total THC	67.8075% Total CBD	78.7221% Total Cannabinoids	NT Not Tested Moisture Content	Not Tested Foreign Matter
-----------------------------	------------------------------	---------------------------------------	---	-------------------------------------

Analyte	LOD %	LOQ %	Result %	Result mg/g
CBC	0.0095	0.0284	4.5950	45.950
CBCA	0.0181	0.0543	ND	ND
CBCV	0.0060	0.0180	0.0892	0.892
CBD	0.0081	0.0242	67.8075	678.075
CBDA	0.0043	0.0130	ND	ND
CBDV	0.0061	0.0182	0.6770	6.770
CBDVA	0.0021	0.0063	ND	ND
CBG	0.0057	0.0172	3.0434	30.434
CBGA	0.0049	0.0147	ND	ND
CBL	0.0112	0.0335	0.3945	3.945
CBLA	0.0124	0.0371	ND	ND
CBN	0.0056	0.0169	1.8935	18.935
CBNA	0.0060	0.0181	ND	ND
Δ8-THC	0.0104	0.0312	ND	ND
Δ9-THC	0.0076	0.0227	0.2220	2.220
THCA	0.0084	0.0251	ND	ND
THCV	0.0069	0.0206	ND	ND
THCVa	0.0062	0.0186	ND	ND
Total THC		0.2220	2.2200	
Total CBD		67.8075	678.0750	
Total		78.7221	787.221	



Total THC = THCA * 0.877 + Δ9-THC
 Total CBD = CBDA * 0.877 + CBD
 LOD = Limit of Detection
 LOQ = Limit of Quantitation
 ND = None Detected
 For plant material, the reported result is based on a sample weight with the applicable moisture content for that sample.



Wes Rogers

Wes Rogers
Principal Scientist
02/17/2021



ISO/IEC 17025:2017 Accredited
Accreditation #108651

Distillate

Sample ID: 2102KCA0139.0337

Cultivar: N/A

Matrix: Concentrates & Extracts

Type: Distillate

Sample Size:

Received: 02/01/2021

Completed: 02/17/2021

Batch#: 1060418-2021-TFD-0129

Client

Lic.#



Heavy Metals by ICP-MS

Complete

Analyte	LOD	LOQ	Mass
Arsenic	0.002 $\mu\text{g/g}$	0.02 $\mu\text{g/g}$	ND
Cadmium	0.001	0.02	ND
Lead	0.002	0.02	ND
Mercury	0.012	0.05	ND

Date Tested: 02/17/2021
LOD = Limit of Detection
LOQ = Limit of Quantitation
ND = None Detected




Wes Rogers
Principal Scientist
02/17/2021

Distillate

Sample ID: 2102KCA0139.0337

Client

Cultivar: N/A

Matrix: Concentrates & Extracts

Received: 02/01/2021

Lic.#

Type: Distillate

Completed: 02/17/2021

Sample Size:

Batch#: 1060418-2021-TFD-0129

Pesticides by LCMS/MS & GCMS/MS

Complete

Analyte	LOD PPM	LOQ PPM	Mass PPM	Analyte	LOD PPM	LOQ PPM	Mass PPM
Abamectin	0.001	0.005	ND	Imidacloprid	0.001	0.005	ND
Acephate	0.001	0.005	ND	Malathion	0.001	0.005	ND
Acetamiprid	0.001	0.005	ND	Metalaxyl	0.001	0.005	ND
Aldicarb	0.001	0.005	ND	Methiocarb	0.001	0.005	ND
Azoxystrobin	0.001	0.005	ND	Methomyl	0.001	0.005	ND
Bifenazate	0.001	0.005	ND	Mevinphos	0.001	0.005	ND
Bifenthrin	0.001	0.005	ND	Myclobutanil	0.001	0.005	ND
Boscalid	0.001	0.005	ND	Naled	0.001	0.005	ND
Carbaryl	0.001	0.005	ND	Oxamyl	0.001	0.005	ND
Carbofuran	0.001	0.005	ND	Paclobotrazol	0.001	0.005	ND
Chlorantraniliprole	0.001	0.005	ND	Permethrin	0.001	0.005	ND
Daminozide	0.001	0.005	ND	Phosmet	0.001	0.005	ND
Diazinon	0.001	0.005	ND	Piperonyl Butoxide	0.001	0.005	0.481
Dimethoate	0.001	0.005	ND	Propoxur	0.001	0.005	ND
Dimethomorph	0.001	0.005	ND	Pyridaben	0.001	0.005	ND
Ethoprophos	0.001	0.005	0.060	Spinetoram	0.001	0.005	ND
Etofenprox	0.001	0.005	ND	Spinosad	0.001	0.005	ND
Etoxazole	0.001	0.005	ND	Spiromesifen	0.001	0.005	ND
Fenoxycarb	0.001	0.005	ND	Spirotetramat	0.001	0.005	ND
Fenpyroximate	0.001	0.005	ND	Spiroxamine	0.001	0.005	ND
Fipronil	0.001	0.005	ND	Thiacloprid	0.001	0.005	ND
Fludioxonil	0.001	0.005	ND	Thiamethoxam	0.001	0.005	ND
Hexythiazox	0.001	0.005	ND	Trifloxystrobin	0.001	0.005	0.135
Imazalil	0.001	0.005	ND				

Date Tested: 02/17/2021
LOD = Limit of Detection
LOQ = Limit of Quantitation
ND = None Detected




Wes Rogers
Principal Scientist
02/17/2021

Distillate

Sample ID: 2102KCA0139.0337

Client

Cultivar: N/A

Matrix: Concentrates & Extracts

Received: 02/01/2021

Lic.#

Type: Distillate

Completed: 02/17/2021

Sample Size:

Batch#: 1060418-2021-TFD-0129

Residual Solvents by HS-GC/MS

Complete

Analyte	LOD PPM	LOQ PPM	Mass PPM	Analyte	LOD PPM	LOQ PPM	Mass PPM
Acetone	0.5	1	<LOQ	Heptane	0.5	1	ND
Acetonitrile	0.5	1	ND	Isobutane	0.5	1	ND
Benzene	0.5	1	ND	Isopropanol	0.5	1	ND
Butane	0.5	1	ND	Isopropyl-Acetate	0.5	1	ND
1-Butanol	0.5	1	ND	Methanol	0.5	1	ND
2-Butanol	0.5	1	ND	2-Methyl-Butane	0.5	1	ND
2-Butanone	0.5	1	ND	2-Methyl-Pentane	0.5	1	ND
Chloroform	0.5	1	ND	3-Methyl-Pentane	0.5	1	ND
Cumene	0.5	1	ND	Methylene-Chloride	0.5	1	ND
Cyclohexane	0.5	1	ND	N,N-Dimethyl-Acetamide	0.5	1	ND
1,2-Dichloro-Ethane	0.5	1	ND	N,N-Dimethyl-Formamide	0.5	1	ND
1,2-Dimethoxy-Ethane	0.5	1	ND	Neopentane	0.5	1	ND
2,2-Dimethyl-Butane	0.5	1	ND	1-Pentanol	0.5	1	ND
2,3-Dimethyl-Butane	0.5	1	ND	Propane	0.5	1	ND
Dimethyl sulfoxide	0.5	1	ND	1-Propanol	0.5	1	ND
1,4-Dioxane	0.5	1	ND	Pyridine	0.5	1	ND
Ethanol	0.5	1	3.554	Sulfolane	0.5	1	ND
2-Ethoxy-Ethanol	0.5	1	ND	Tetrahydrofuran	0.5	1	ND
Ethyl-Acetate	0.5	1	ND	Toluene	0.5	1	ND
Ethyl-Benzene	0.5	1	ND	Trichloroethene	0.5	1	ND
Ethyl-Ether	0.5	1	ND	Xylenes	0.5	1	ND
Ethylene glycol	0.5	1	ND	n-Hexane	0.5	1	4.954
Ethylene oxide	0.5	1	ND	n-Pentane	0.5	1	ND

Date Tested: 02/17/2021
LOD = Limit of Detection
LOQ = Limit of Quantitation
ND = None Detected




Wes Rogers
Principal Scientist
02/17/2021